

SAFETY ORGANIZATION(S):

THIS FILTER HAS BEEN FORMALLY RECOGNIZED, CERTIFIED OR APPROVED BY THE LISTED AGENCY. THEREFORE, ALL TEST/REQUIREMENTS SPECIFIED IN THE LATEST REVISION OF THE FOLLOWING AGENCY STANDARDS HAVE BEEN MET:

- UL RECOGNIZED
- CSA CERTIFIED
- VDE APPROVED
- UL 1283
- CSA 22.2, NO.0,0.4,8
- VDE 565-3, 625

OPERATING SPECIFICATIONS:

LINE VOLTAGE/CURRENT:  
 6 AMP., 120/250 VAC  
 5 AMP./40°C, 250 VAC  
 50-60Hz

LINE FREQUENCY:  
 MAX. LEAKAGE CURRENT, EACH  
 LINE TO GROUND  
 OPERATING AMBIENT TEMP. RANGE:

- .3mA at 120V 60 Hz
- .5 mA at 250V 50 Hz
- 10°C TO +40°C @ RATED CURRENT, I<sub>r</sub>

IN AN AMBIENT, T<sub>a</sub>, HIGHER THAN 40°C, THE MAXIMUM OPERATING CURRENT, I<sub>o</sub>, IS AS FOLLOWS:

$$I_o = I_r \sqrt{\frac{85-T_a}{45}}$$

RELIABILITY SPECIFICATIONS:

STORAGE TEMPERATURE:  
 HUMIDITY:  
 CURRENT OVERLOAD TEST:

- 40°C TO +85°C
- 21 DAYS @ 40°C 95% RH
- 6 TIMES RATED CURRENT FOR 8 SECONDS

TEST SPECIFICATIONS:

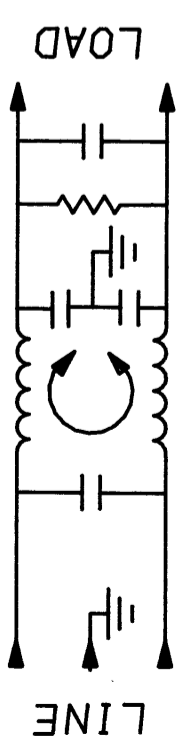
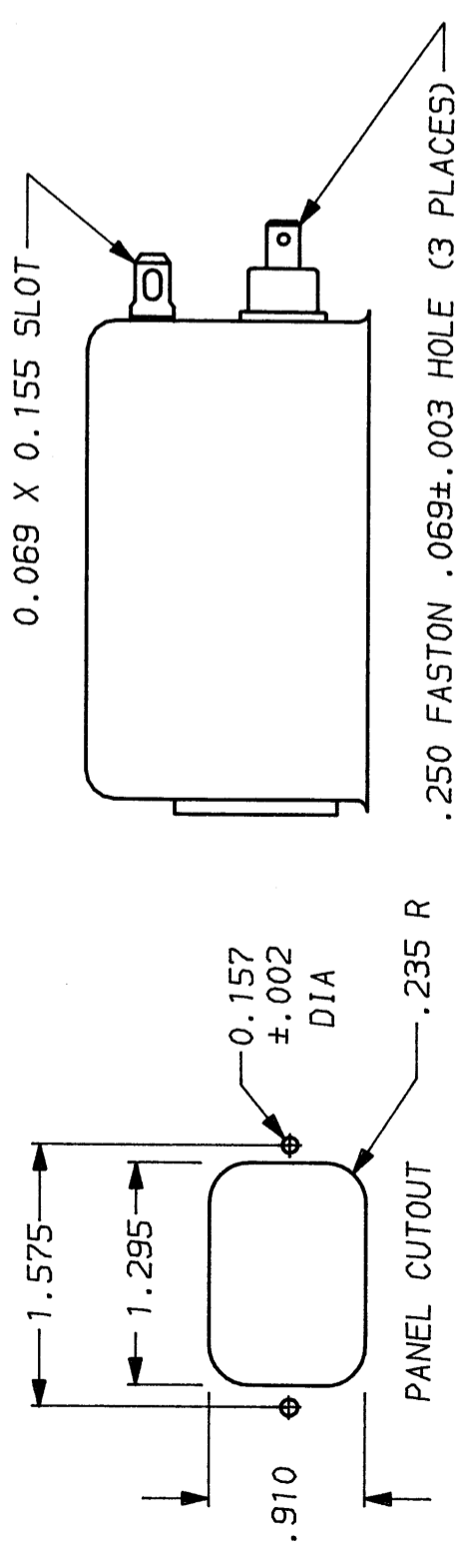
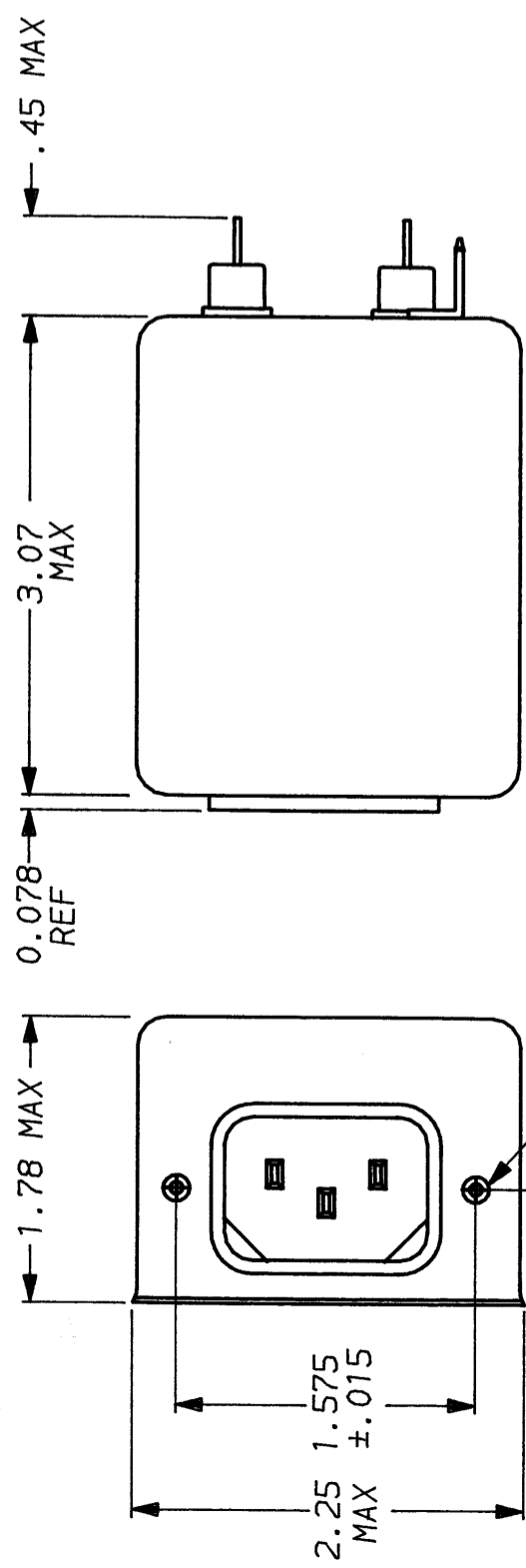
INDUCTANCE:  
 CAPACITANCE: (MEASURED @ 1 KHz, 0.25 VAC MAX., 25°C ±1°C)  
 LINE TO GROUND:  
 LINE TO LINE:  
 DISCHARGE RESISTOR  
 LINE/GROUND AND LINE/LINE  
 INSULATION RESISTANCE

- 18.5 mH NOMINAL
- .004µF ±20%
- 1.089µF ±20%
- 330KΩ
- 6000 MΩ (MIN) AT 100 VDC
- 20°C AND 50% RH

RECOMMENDED RECEIVING INSPECTION HIPOT:

LINES TO GROUND:  
 LINE TO LINE:  
 FILTER APPROVAL:  
 THE BEST WAY TO SELECT AND QUALIFY A FILTER IS FOR YOUR ENGINEERING TO TEST THE UNIT IN YOUR EQUIPMENT.

- 2250 VDC FOR 1 MINUTE
- 1450 VDC FOR 1 MINUTE



50Ω - 50Ω (MINIMUM) INSERTION LOSS												
FREQUENCY MHZ	.01	.03	.05	.15	.5	1	2	5	8	10	20	30
COMMON dB	16	26	30	41	47	44	43	43	40	40	42	42
DIFF. dB	4	2	14	51	70	70	65	50	47	50	55	55

This document is proprietary to CORCOM INC. and is not to be reproduced nor used for manufacturing purposes except on CORCOM's order or prior written consent.

TOLERANCE EXCEPT AS NOTED  
 DECIMAL: .XXX .XX .X ANGLES ± 1°  
 ENGLISH: ±.025  
 METRIC: ±  
 MATERIAL:  
 AS SUPPLIED



POWER LINE FILTER

FINISH: AS SUPPLIED

SCALE	DATE	DRG. NO.	REV.
NTS	7-26-90		6E7.03
DRW. BY	ORIGINATOR		
CFW	CFW		